

MINI ASSEMBLAGE P.U.D. PLAT ONE

ALSO KNOWN AS GREYSTONE P.U.D.

BEING A REPLAT OF TRACTS 110 THROUGH 115 AND A PORTION OF TRACTS 85, 105, 108, 109, 116, 117, 118, 119, AND 120, BLOCK 55, PALM BEACH FARMS CO., PLAT NO. 3, PLAT BOOK 2, PAGES 45 THROUGH 54, PUBLIC RECORDS OF PALM BEACH COUNTY FLORIDA, BEING IN SECTION 28, TOWNSHIP 45 SOUTH, RANGE 42 EAST PALM BEACH COUNTY, STATE OF FLORIDA
AUGUST 2006 SHEET 6 OF 9

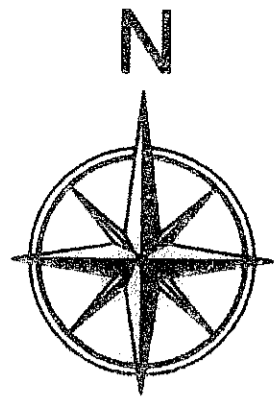
This Instrument Prepared By:
Kevin M. Beck, P.S.M.
Certificate of Authorization No. LB 6791
AUGUST 2006



Calvin, Giordano & Associates, Inc.
Engineers Surveyors Planners

500 Village Boulevard, Suite 340
West Palm Beach, Florida 33409
Phone: 561.854.8161 Fax 561.854.6380

153



GRAPHIC SCALE

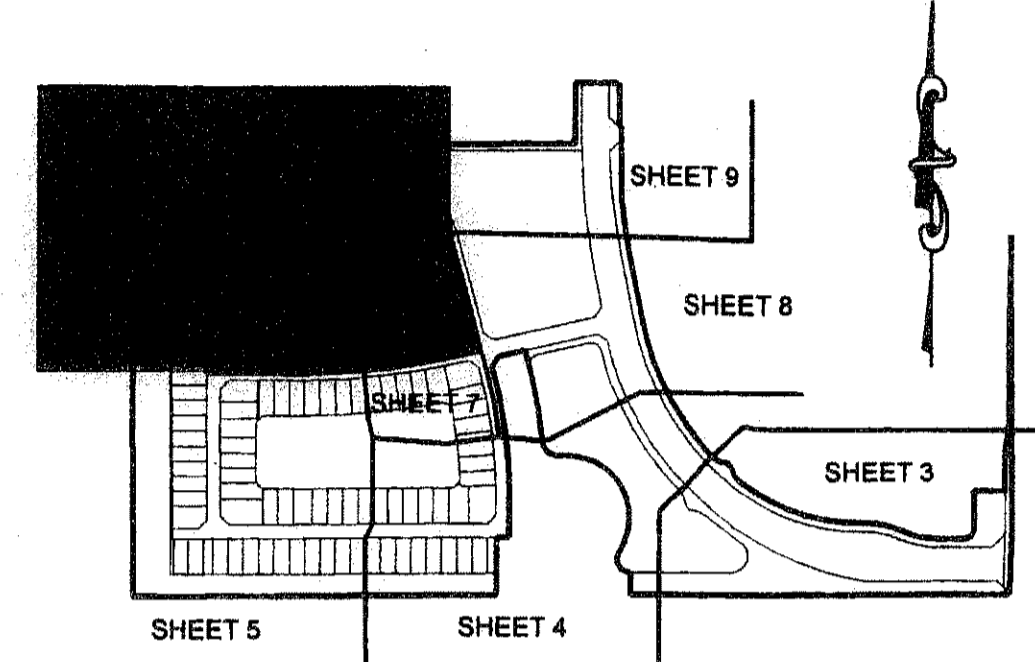
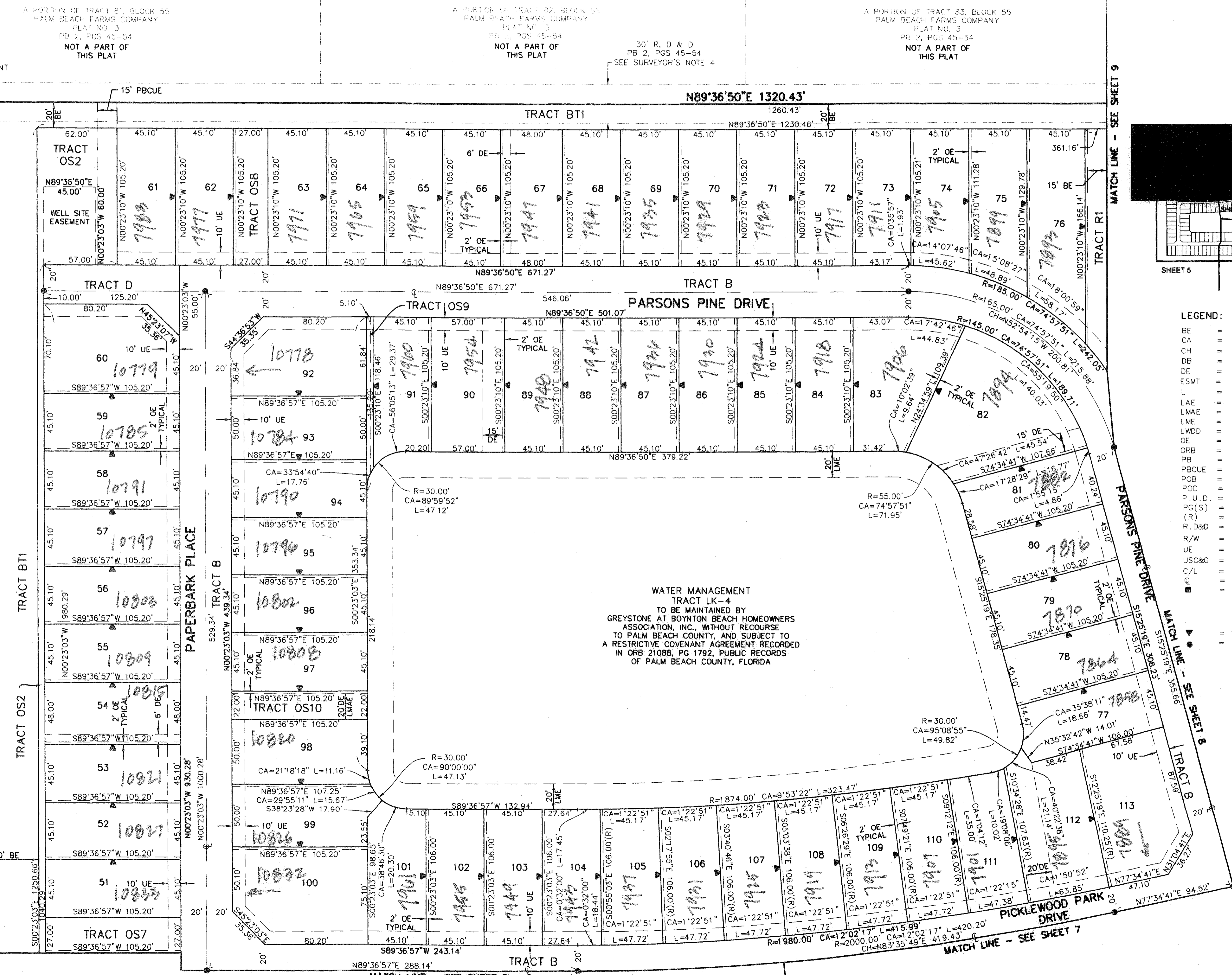


(IN FEET)
1 inch = 40 ft.

FLORIDA'S TURNPIKE
L.W.D. E-2-E CANAL
ORB 1732, PG 612

60' W.O.D. EASEMENT
ORB 1732, PG 612

WEST LINE OF TRACTS 112-113
TRACT OS12



SHEET INDEX MAP
NOT TO SCALE

- LEGEND:
- BE = BUFFER EASEMENT
 - CA = CENTRAL (DELTA) ANGLE
 - CH = CHORD
 - DB = DEED BOOK
 - DE = DRAINAGE EASEMENT
 - ESMT = EASEMENT
 - L = ARC LENGTH
 - LAE = LIMITED ACCESS EASEMENT
 - LMAE = LAKE MAINTENANCE ACCESS EASEMENT
 - LME = LAKE MAINTENANCE EASEMENT
 - LWDD = LAKE WORTH DRAINAGE DISTRICT
 - OE = OVERHANG EASEMENT
 - ORB = OFFICIAL RECORDS BOOK
 - PB = PLAT BOOK
 - PBCUE = PALM BEACH COUNTY UTILITY EASEMENT
 - POB = POINT OF BEGINNING
 - POC = POINT OF COMMENCEMENT
 - P.U.D. = PLANNED UNIT DEVELOPMENT
 - PG(S) = PAGE(S)
 - (R) = RADIAL
 - R,D&D = ROAD, DIKE AND DITCH RESERVATION
 - R/W = RIGHT-OF-WAY
 - UE = UTILITY EASEMENT
 - USC&G = UNITED STATES COASTAL AND GEODETIC CENTERLINE
 - C/L = CENTERLINE
 - PERM = PERMANENT REFERENCE MONUMENT (4" X 4" CONCRETE MONUMENT WITH A 2" ALUMINUM PLATE STAMPED "LB 6791", UNLESS OTHERWISE NOTED)
 - ZLO = ZERO LOT LINE SYMBOL
 - PC = PERMANENT CONTROL POINT (SET "PK" NAIL AND DISK LABELED "LB 6791")

REVISION
MINI ASSEMBLAGE PL 1
PAGE 109
BLOCK 55
QUAD 50
SS
DATE 9/20
DWD NAME